

INSTALLATION INSTRUCTIONS

EQUIPMENT REQUIRED:

WIRING ACCESS LOCATION:

DRILL BITS: 7/16

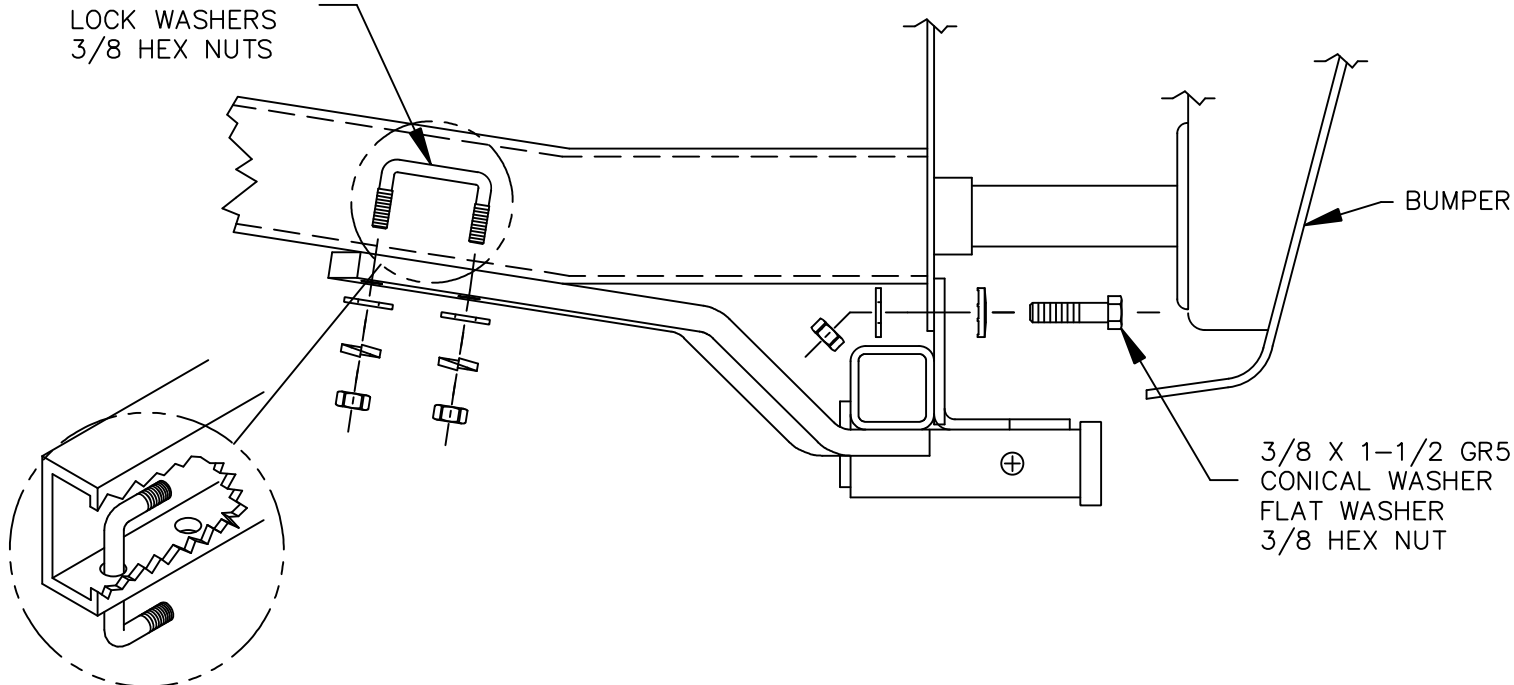
HITCH REQUIRES 1/2" PIN AND CLIP

WRENCHES: (TIGHTEN ALL FASTENERS WITH TORQUE WRENCH) 14mm, 9/16, 11/16

VEHICLE

BUICK ELECTRA / LE SABRE WAGONS
 CHEVROLET CAPRICE / IMPALA WAGON
 OLDSMOBILE CUSTOM CRUISER WAGON
 PONTIAC SAFARI / PARISIENNE WAGON

3/8 GR 5 U-BOLTS
 FLAT WASHERS
 LOCK WASHERS
 3/8 HEX NUTS

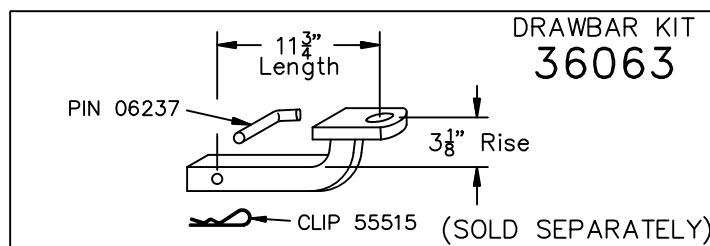


1. REMOVE TWO LOWER ENERGY ABSORBER UNIT TO FRAME MOUNTING BOLTS PER SIDE AND DISCARD.
2. REMOVE UNDERCOATING FROM ATTACHMENT SURFACES. USING THE HITCH AS A TEMPLATE, DRILL TWO 7/16" HOLES IN EACH FRAME RAIL FOR U-BOLTS.
3. ON SOME MODELS IT MAY BE NECESSARY TO USE THE 7/16 X 1 X 2 BLOCK TO LOWER EXHAUST PIPE BY EXTENDING THE REAR HANGER.
4. INSTALL FASTENERS AS SHOWN.

TIGHTEN 3/8 NUTS TO 31 LB.-FT.

TIGHTEN NUTS IN U-BOLTS TO 25 LB.-FT.

* TIGHTEN U-BOLTS EVENLY WITH HAND TORQUE WRENCH. DO NOT USE IMPACT WRENCH.



USE ONLY THE DRAWBAR SHOWN FOR CORRECT BUMPER CLEARANCE AND HEIGHT.
 DRAWBAR MUST BE USED IN THE RISE POSITION ONLY.

THIS PRODUCT COMPLIES WITH SAFETY SPECIFICATIONS AND REQUIREMENTS FOR CONNECTING DEVICES AND TOWING SYSTEMS OF THE STATE OF NEW YORK, V.E.S.C. REGULATION V-5 AND SAE J684.

APPROX WEIGHT (LB.)

42.8

FASTENER KIT

01130-451

NOTE: Check hitch frequently, making sure all fasteners and ball are properly tightened. If hitch is removed, plug all holes in trunk pan or other body panels to prevent entry of water and exhaust fumes. A hitch or ball which has been damaged should be removed and replaced. Observe safety precautions when working beneath a vehicle and wear eye protection. Follow car maker's specs for maximum trailer weight and tongue weight. Do not cut access or attachment holes with a torch.

Cequent Performance Products
 Plymouth, Michigan

PRINTED IN MEXICO